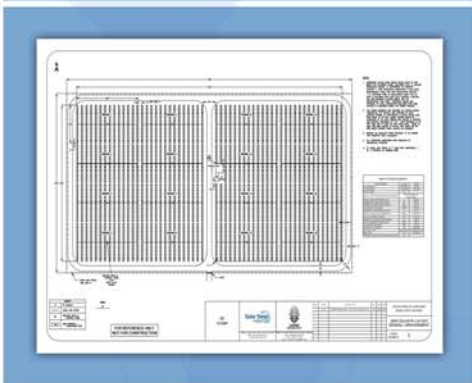
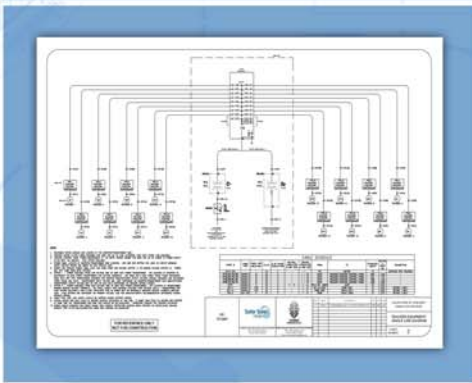
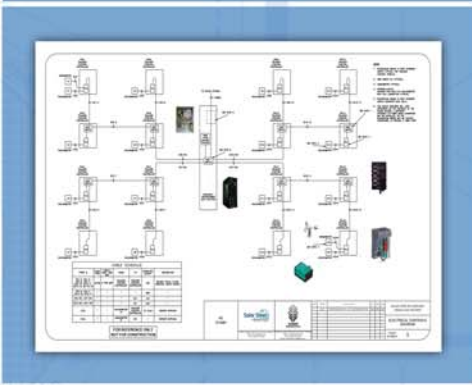


# Project Experience

## 2MW Single Axis Tracker Layout



Designed a standard 2MW Single Axis Tracker layout to be used for future clients to use as template to layout specific solar projects. The design included the layout of sixteen (16) tracker units arranged in a 4x4 block, power and communications for trackers, and DC wiring from modules to a 2MW inverter/transformer skid. The design also included road layout, fence requirements, tracker controls, conduit, wire, and trenching to meet NEC requirements. The design included evaluation of the number of trackers in a power block.



Client: Gestamp Solar Steel/Gonvarri Steel Services  
Date Design Started: March 2015  
Date Design Completed: April 2015

